

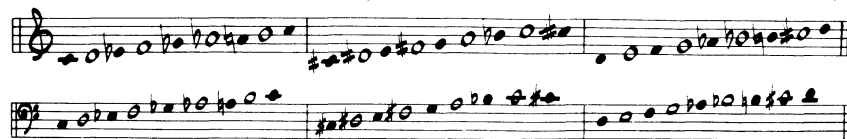
# **DIMINISHED SCALES** Half & Whole Step Construction: WHWHWHWH

There are only three different DIMINISHED SCALES. Chord tones are written in black: root, 3rd, 5th and 7th.

This Diminished scale fits these chord symbols: C<sup>o</sup>7, Eb<sup>o</sup>7, Gb<sup>o</sup>7, A<sup>o</sup>7

This Diminished scale fits these chord symbols: C<sup>o</sup>7, E<sup>o</sup>7, G<sup>o</sup>7, Bb<sup>o</sup>7

This Diminished scale fits these chord symbols: D<sup>o</sup>7, F<sup>o</sup>7, Ab<sup>o</sup>7, B<sup>o</sup>7



This scale actually contains a b9, #9, #4, #5 in addition to root, 3rd & b7. I write it as C7+9, D7+9, Eb7+9, etc.

## **DIMINISHED WHOLE TONE SCALES** Half & Whole Step Construction: HWHWWWW

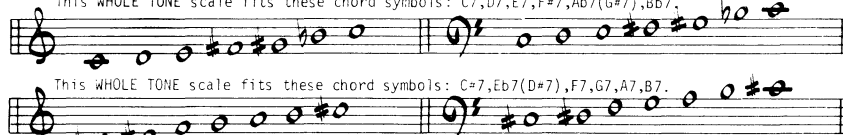
This scale is sometimes called "Altered" or "Super Locrian".



# **WHOLE TONE SCALES** Half & Whole Step Construction: WWWWWW

There are only two WHOLE TONE scales. You can think of the C, D, E, F, G, and Bb (A#) whole tone scales as being one scale. The other scale is built on these tones: C#, D#, F, G, A, B. The C whole tone scale is exactly like the D whole tone scale, or one built on E, F#, G# or Bb.

This WHOLE TONE scale fits these chord symbols: C7, D7, E7, F#7, Ab7(G#7), Bb7.



This WHOLE TONE scale fits these chord symbols: C#7, Eb7(D#7), F7, G7, A7, B7.

WHOLE TONE scales can also be used as substitute scales over other chord symbols. See Scale Syllabus.

## **HALF-DIMINISHED SCALES** Half & Whole Step Construction: HWHWWWW

Half-dim is sometimes called (minor 7, b5)

(The second tone can be raised a half-step to form the Half-Dim. #2 Scale. This scale can be used interchangeably with regular Half-Dim. Scale)

